



window styling

# Motorisation of Luxaflex® Products

# Motorisation Control for all Types of Blinds

In today's world of technology, we all like the convenience of 'pressing buttons' to operate our appliances or even having them controlling themselves. Luxaflex® blinds can also be operated in this fashion with motorisation and control Systems to suit most applications.



## Wood and Aluminium Venetian blinds

16, 25, 35 & 50mm aluminium and 25 & 50mm Wood Venetian blinds can be motorised, some having the option of battery powered tilt only systems (16,25 & 50mm aluminium and 50mm Wood), or fully hardwired raise, lower and tilt systems for all.

The battery powered tilt only systems have the advantage of not having to run cabling to the window, just a battery pack. The 16 & 25mm systems have a simple two channel infra red control system, whilst the 50mm is radio control with a choice of remote controls. The batteries will normally have a life in excess of a year, in normal use. The hardwired systems have 24v d.c. motors for the 16, 25 & 35mm blinds and 240v a.c. motors for the 50mm.

The advantages of the hardwired systems is there are no batteries to be replace, power either being supplied by a range of 24v power supplies, to suit your requirements, or in the case of 240v motors direct from your mains supply. This also opens up a wide choice of control options, from simple switch or remote control, to more sophisticated control systems.

## Roller Blinds

Roller blinds, including those from the Japanese Design Collection, can be motorised using 24v d.c. motors mounted in our 34mm diameter roller systems for normal sized windows or using 240v a.c. motors mounted in 47, 63 or 85mm rollers for larger commercial installations. The 240v motors are also used for our Litemaster Blackout roller system and our range of external roller blinds.

## Vertical Louvre Blinds

Vertical Louvre blinds, including the 250mm vanes and Japanese Design Collection 250mm vanes can be motorised. A battery powered tilt control system is available where the vanes can be rotated with a simple two channel infra red remote control system, with the vanes being drawn by cords. Alternatively a hardwired 24v d.c motor can be mounted, always on the back left of the track, which will both rotate and traverse the vanes.

## Silhouette®

Silhouette® blinds, with the exception currently of the 100mm vane, can be motorised. A battery operated system called Powerise® is available which will both raise and lower and tilt the blind. There are two versions available that can be controlled by a simple two channel infra red control system or a radio control system which can cope with larger sizes and can also have a variety of control options. A 24v d.c. motor option is also available which will give a wider choice of control options.

## Roman Blinds

Roman blinds can be raised and lowered using a 24v d.c. motor system.

## Duette® and Plissé blinds

Duette® and Plissé blinds, both freehanging and roof blinds, can be motorised using a 24v d.c. motor system. Roof blinds have normally to be wired in a slightly different manner to other products, please see wiring diagrams for details.



# Control Options

Combined switch transformer for simple control of an individual blind (with the exception of vertical louvre blinds)



Either 5 position rocker switch or 3 button switches to control individual blinds or small groups of blinds



The most popular option is remote control by means of radio transmitters. There are options from wall mounted single channel transmitters or handsets offering single, five or twenty channels



Less popular, but still available, is remote control by means of either single or eight channel infra red transmitters.



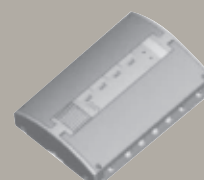
More sophisticated controls are also available, from 7 day time clocks, temperature or light control to sun and wind protection control for external products.



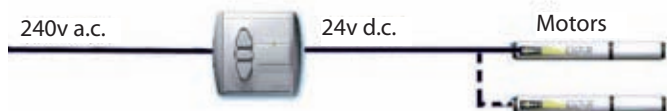
A range of different powered transformer/power supplies are available that are suitable to power from a single blind up to eleven, depending on the product and size of the blinds. Some of these have inbuilt receiver/controls to be able to operate groups of blinds together.



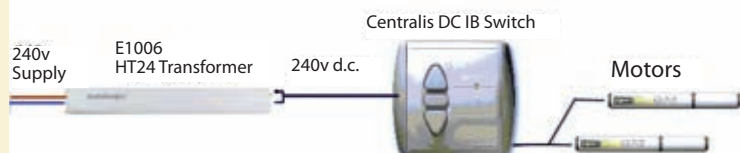
As we become more sophisticated and have home management control systems, we have a range of products that will allow us to interface with these systems, to enable the blinds to be incorporated with these controls.



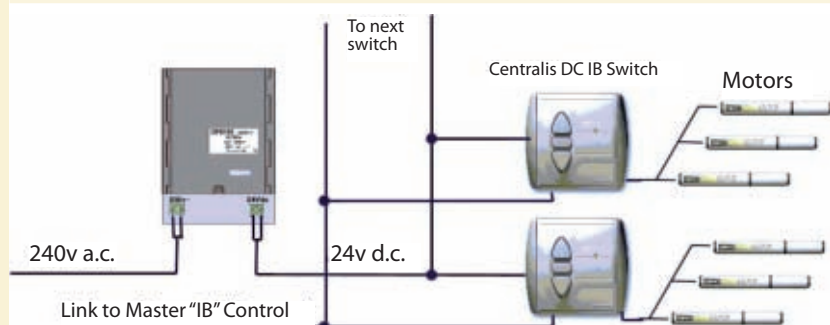
# Example schematic diagrams to show a few of the options available



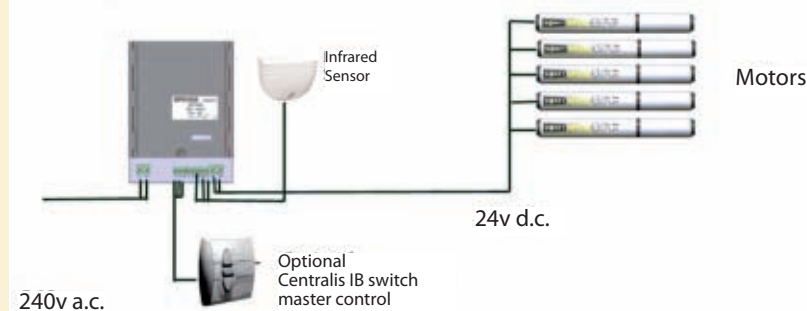
Single combined switch/transformer for Individual blind (excluding vertical)



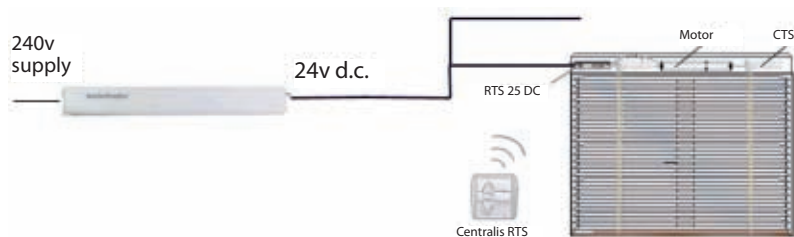
Switch control for individual or small group of blinds.



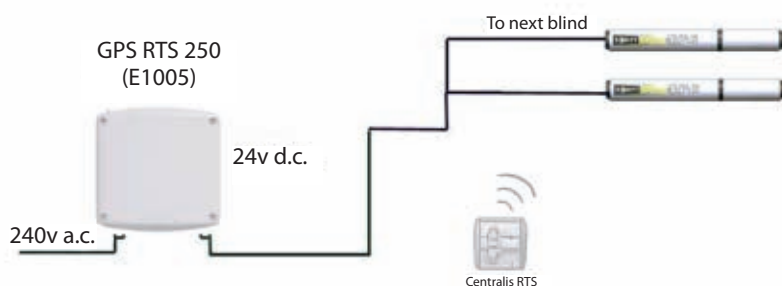
Switch control for a number of individual or small group of blinds.



Switch or infra red control for a large group of blinds



Radio remote control for individual blinds. Receivers can be in some cases be built into headrail of blinds or mounted separately outside the blind.



Radio remote control for a group of blinds all to operate together.

Other systems are available, please contact our Technical Team for further information.