

Luxaflex®

year

guarantee

Luxaflex®



Guarantee, Installation and Operating Instructions
Luxaflex® Awnings





Guarantee, Installation and Operating Instructions Luxaflex® Awnings

Dear Customer,

We thank you for choosing Luxaflex® products. In the unlikely event that the Luxaflex product guarantee service is needed, please contact the dealer from whom the product was purchased. Alternatively you may contact a member of our authorised Luxaflex® service network. In order to minimise any unnecessary inconvenience, we suggest that the product installation instructions are read carefully before contacting the dealer on our service network.

GUARANTEE

Luxaflex® guarantees that all Luxaflex® window covering products are free from material and assembly defects, provided that such products were properly installed in a domestic situation. For non-domestic installations, refer to the Luxaflex® general sales conditions. The obligation of Luxaflex® is limited to repair or replacement of the defective materials or components. Repairs will be made with like or similar parts. The guarantee is limited to the original purchaser.

Scope of warranty	Year since date of purchase				
	1 yr	2 yrs	3 yrs	4 yrs	5 yrs
Removal of product from end user's window	X	X	X	X	X
Carriage (to - from factory)	✓	X	X	X	X
Labour (assembly / repair)	✓	X	X	X	X
Re-installation of product at end users window	X	X	X	X	X
Components (with like or similar parts)	✓	✓	✓	✓	✓
Cords	✓	✓	✓	X	X
Fabric (with like or similar fabric)	✓	✓	✓	X	X
Consequential loss	X	X	X	X	X

This guarantee is invalid if the damage or failure is caused by:

- Accident • Misuse/Abuse • Alteration • Motorised devices • Exposure to elements
- Normal wear and tear • Blinds that are not fitted in a domestic situation.
- Failure to follow measurement, installation, cleaning and maintenance instructions

The guarantee is exclusive and in lieu of all other obligations, liabilities or warranties. In no event shall Luxaflex be liable or responsible for incidental or consequential damages or for any other direct or indirect damage, loss, cost, expense or fee.

The guarantee does not affect the consumers statutory rights under applicable national laws in force, nor the consumers rights against the dealer arising from their sales/purchase contract.

This manual is an integral part of the Luxaflex® awning and has been written for users. The manual must be kept in one piece and stored in an easily accessible location until the awning is disposed of.

Thank you for choosing a Luxaflex® awning system. Providing that your system is correctly installed and is not used in unsuitable weather conditions it will provide many years of trouble free use.

An awning is primarily for sun protection. It may be used in light intermittent showers but should not be left wound out in WINDY, RAINY OR SNOWY CONDITIONS . Failure to comply with this may result in damage to the fixing surface the fabric or the awning itself. Also if your awning gets wet, it is recommended that your awning is left to dry before winding back in (depending on conditions).

It is not advisable to wind awnings only half way out as the strength of the arms is increased as they are wound out and optimum strength is achieved just before they 'lock out'. There should always be a visible gap at the elbow joint to enable the arm to flex. If lock out is reached, wind the awning back in slightly until a gap is visible at the elbow joint

INSTALLATION, OPERATION AND CARE.

IMPORTANT! THESE AWNINGS ARE HEAVY ITEMS. ALWAYS USE THE CORRECT LIFTING METHOD OR LIFTING APERATUS.

UNPACKING YOUR AWNING.

When removing the awning from the packaging please ensure you do not scratch the powder-coated profiles or cut the fabric by inserting a knife, use scissors.

FOLLOW THE INSTALLATION INSTRUCTIONS CAREFULLY

- Ensure the surface to which you are fixing is strong enough to take the awning. The minimum traction force for fixing is 70 N/m² on a surface with BN25. If you are unsure of the fixing provision consult a structural engineer or architect.
- On single storey buildings (i.e. extensions, bungalows) with a small number of brick courses above where you intend to fix the awning, you should always install with spreader plates.
- The awning should be installed to leave a minimum of 2,500mm (88 1/2") clearance under the front rail (headway) when wound out.

FIXINGS.

There are various types of fixings e.g. rawl bolts, thunder bolts for brick, coach screws for wood. Also there is chemical resin. You must use the appropriate fixing for the surface you fixing to.

ELECTRICAL INSTALLATION

We recommend electrical installations be carried out by a qualified electrician. Wiring diagrams and specifications are available on request.

CLEANING AND MAINTENANCE

Luxaflex® awning systems are virtually maintenance free. The profiles can be cleaned with a sponge and mild detergent and the fabric on your awning can be cleaned with lukewarm soapy water and a cloth. You should never use anything abrasive (e.g. pressure washers) as this may strip away the protective coating on the fabric. Speacialist cleaning kits are available from you retailer on request.

AREZZO 2020

The Awning is delivered fully assembled except the top profile (if ordered).

NB: NEVER ALTER THE POSITION OF THE ARMS ON THE SQUARE BAR. A BRACKET SHOULD BE INSTALLED ADJACENT TO EACH ARM (NO MORE THAN 100MM AWAY FROM ANY ARM) BLINDS WITH 2 ARMS AND OVER 4 METRES IN WIDTH SHOULD HAVE CENTRE BRACKET.

- Remove installation brackets from square bar, noting the position on the awning.
- Determine the height of the awning and fix brackets making sure brackets are straight and square (if they are not it may be difficult to locate square bar into brackets).
- Place the awning square bar into the brackets and secure with the vertical retaining bolt.
- If awning has a top profile slide into top of fixing bracket then tighten grub screw.



ANGLE ADJUSTMENT

- Wind the awning out with someone supporting the front rail
- Turn the adjustment bolt (located at the front of the back bar arm support) clockwise to raise and anti-clockwise to lower.



ORVIETO - Installation

The Awning is delivered fully assembled except the top profile (if ordered).

NB: NEVER ALTER THE POSITION OF THE ARMS ON THE SQUARE BAR. A BRACKET SHOULD BE INSTALLED ADJACENT TO EACH ARM (NO MORE THAN 100MM AWAY FROM ANY ARM) BLINDS WITH 2 ARMS AND OVER 4 METRES IN WIDTH SHOULD HAVE CENTRE BRACKET.

- Remove installation brackets from square bar, noting the position on the awning.

- Determine the height of the awning and fix brackets making sure brackets are straight and square (if they are not it may be difficult to locate square bar into brackets).
- Place the awning square bar into the brackets and secure with the vertical retaining bolt.
- If awning has a top profile slide into top of fixing bracket then tighten grub screw.

ANGLE ADJUSTMENT

- Wind the awning out with someone supporting the front rail.
- Turn the adjustment bolt (located at the front of the back bar arm support) clockwise to raise and anti-clockwise to lower.



VARIOSUN - Installation

NB: NEVER ALTER THE POSITION OF THE ARMS ON THE SQUARE BAR. A BRACKET SHOULD BE INSTALLED ADJACENT TO EACH ARM (NO MORE THAN 100MM AWAY FROM ANY ARM) BLINDS WITH 2 ARMS AND OVER 4 METRES IN WIDTH SHOULD HAVE CENTRE BRACKET.

- Remove installation brackets from square bar, noting the position on the awning.
- Determine the height of the awning and fix brackets making sure brackets are straight and square (the brackets also enable the awning to top fix - these should be installed in the similar way) if they are not it may be difficult to locate square bar into brackets.
- Place the awning square bar into the brackets and secure with the vertical retaining bolt.
- If awning has a top profile slide into top of fixing bracket then tighten grub screw.

ANGLE ADJUSTMENT

- If the awning is not electric, wind the awning out with the crank handle provided.
- Locate the crank into the winding gear under the arm support and wind clockwise to raise, anti-clockwise to lower. (NB adjust each arm a little at a time to avoid unnecessary strain on the opposite arm.)

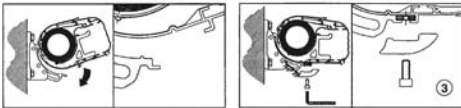
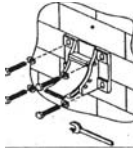


ARMONY 3000 - Installation

The Awning is delivered fully assembled.

NB: A BRACKET SHOULD BE INSTALLED ADJACENT TO EACH ARM (NO MORE THAN 100MM AWAY FROM ANY ARM) BLINDS WITH 2 ARMS AND OVER 3.5METRES IN WIDTH SHOULD HAVE CENTRE BRACKET.

- Remove fixing brackets from awning.
- Remove Allen key bolt from brackets (fig 3)
- The position of the brackets and screw holes should be marked on the wall in the required position ensuring the brackets are perfectly level and square.
- Re fix insert Allen key bolts on to lug that holds awning-securing plate and tighten.
- Loosen small Allen key grub screws at the side of the bracket slide fixing plate all the way down tighten grub screws.
- Lift awning into fitted brackets lower down on saddle of bracket slide in retaining plate into awning and bracket (fig 3) secure with Allen key bolt.



ANGLE ADJUSTMENT

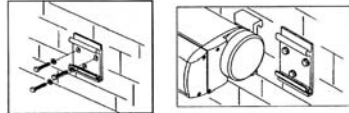
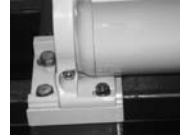
- Release all small Allen key grub screws and bolts underside brackets (see picture). Send awning out with the help of someone supporting the front rail and adjust bolt clockwise to raise or anti-clockwise to lower (see picture) to required height. Once required height is reached, tighten nut on underside of bracket and all Allen key bolts.



BASE PLUS - Installation

The awning is delivered fully assembled.

- The brackets must be installed at each end of the awning.
- With awning on the floor measure the distance from one end hook bracket to the other end.
- Once the overall width has been established, determine the ideal fixing height and mark the position of the first bracket.
- DRILL AND FIX.
- Use a chalk line or laser level so the second bracket is level.
- DRILL AND FIX.
- Hook the awning on to the brackets, fix and tighten retaining bolts.



ANGLE ADJUSTMENT.

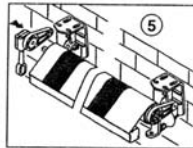
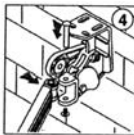
- Wind the awning out with someone supporting the front rail, loosen Allen key bolts on both sides of awning (on the underside of the awning is the raise or lower Allen key bolt). While someone supports the weight of the front rail, turn the Allen key under the awning clockwise to raise or anti-clockwise to lower. Once at the required height, tighten the Allen key bolts at both ends. Fit end caps.



SILVER PS - Installation

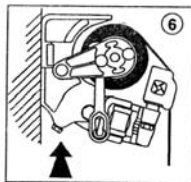
The awning is delivered in kit form as follows:
1 x pair arm support and arms.
Blind roller with fabric rolled onto the tube and fabric and front rail attached.

- Place the brackets onto the ends of the roller whilst on the floor and measure outside edge to outside edge of brackets to ascertain awning width.
- Mark the position of the brackets on the wall.
- Drill and fix the gear bracket.
- Insert the roller into the installed gear bracket, hold the 2nd bracket onto the end of the roller, place a spirit level onto the top of the roller and mark the position of the second bracket.
- Take down the roller and install the second bracket.
- If you have a top profile, this should now be installed with the 'L' shaped brackets provided.
- Fit the arms onto the arm supports with the pins and star caps provided. (fig 4).
- Put the pin end of the roller into the bracket.
- Remove the gear plate (as Fig 5), insert the square end into the plate and replace the plate.
- Wind the fabric out a small way.
- Loosely fit the arms to the front rail.
- Remove the plastic sleeves.
- Align the elbows of the arms by sliding the front of the arms along the front rail.
- When aligned, tighten off the arm to front rail connectors.



ANGLE ADJUSTMENT

- Wind the awning out.
- Loosen the horizontal bolts on the arm supports.
- Turn the vertical bolts on the underside of the arm supports to adjust the angle (fig 6).
- Put a spirit level on the front rail of the awning and ensure it is completely level by regulating the arms.
- Lock off the arms by tightening the horizontal bolts on the arm supports.



SILVER BQ - Installation

The awning is delivered fully assembled.

NB. NEVER ALTER THE POSITION OF THE ARMS ON THE SQUARE BAR. A BRACKET SHOULD BE INSTALLED ADJACENT TO EACH ARM NO MORE THAN 100MM FROM THE ARM. BLINDS OVER 3M WIDE SHOULD HAVE A CENTRAL BRACKET INSTALLED.

- Remove the installation brackets from the square bar, noting their positions.
- The position of the brackets and fixing holes should be marked on the wall in the correct places, ensuring the brackets are perfectly level and square (NB. if the wall is out of square it will be difficult to locate the square bar into the brackets. In this case, the brackets will need to be packed to ensure they are linearly square).
- The brackets also enable the awning to be top fixed and these should be installed in a similar way ensuring they are square and level.
- Drill and fix the brackets.
- If you have a top profile this should now be installed with the brackets provided.
- Place the complete awning bar square into the brackets and secure with the vertical retaining bolts.

ANGLE ADJUSTMENT

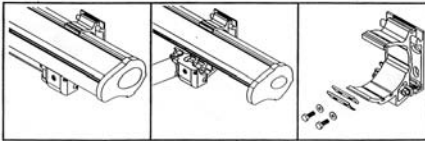
- Wind the awning out.
- Loosen the horizontal bolts on the arm supports.
- Turn the vertical bolts on the underside of the arm supports to adjust the angle.
- Place a spirit level on the front rail to ensure it is level and tighten the 2 horizontal arm support bolts to lock the position.

PALLADIO 2060- Installation

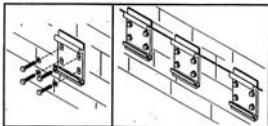
The Awning is delivered fully assembled with the installation brackets fitted in the correct positions.

NB: NEVER ALTER THE POSITION OF THE ARMS. A BRACKET SHOULD BE INSTALLED DIRECTLY BEHIND EACH ARM. AWNINGS UP TO 5M WIDE WILL HAVE 2 BRACKETS AND 2 ARMS. AWNINGS IN EXCESS OF 5M WILL HAVE ADDITIONAL BRACKETS AND ARMS (THE QUANTITY WILL DEPEND ON THE AWNING WIDTH).

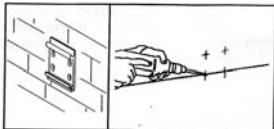
- Remove the fixing plates from brackets by removing the retaining bar, which is attached to each bracket by 2 bolts. (If you have specified top fix brackets with your order, they will already be bolted to the standard fixing plates).



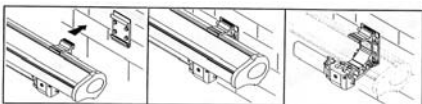
- Mark the positions of the fixing plates onto the installation surface, ensuring each bracket is level and square. If the wall is out of square, it will be difficult to locate the cassette brackets into the fixing plates. In this case, the fixing plates will need to be suitably packed to ensure they are linearly square.



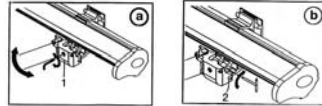
- Drill and fix the fixing plates using the appropriate fixing method for the installation surface.



- Lift the awning and hook the cassette brackets onto the fixing plates. Secure the brackets onto the fixing plates by refitting the retaining bars and bolts to each bracket.



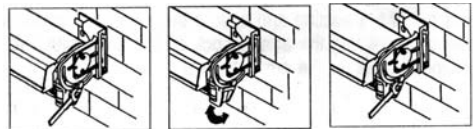
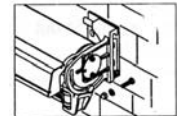
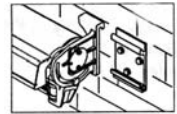
- To adjust the front rail height, the awning should first be extended to its maximum operating position (this is the point just before the arms lock or straighten and the cover begins to dip). Loosen locking bolt 2 (fig b) on the first arm support. While taking the weight of the arm you are adjusting, undo or tighten adjusting bolt (fig b) clockwise to raise, or anti-clockwise to lower. Once at the required height, tighten locking nut.



MILANO Installation.

The awning is delivered fully assembled.

- The brackets must be installed at each end of the awning. With the awning on the floor measure the distance from outside edge to outside edge to establish the overall width. Ascertain the ideal fixing height and mark the position of the bracket on the wall.
- Drill and fix.
- Then with a chalk line or laser level mark the position of the second bracket.
- DRILL AND FIX.
- Hook the awning onto the brackets fit and tighten the retaining bolts.



ANGLE ADJUSTMENT.

- Wind the awning out with somebody supporting the front rail. (NOTE: WHEN SUPPORTING THE FRONT RAIL IT MAY BECOME HEAVY)
- Loosen the locking nuts on each end of the awning (fig 3). You can raise or lower the awning to the position required (fig 4).
- When the awning is at the required level tighten the bolts at each end and fit bolt head covers.



ITALIA C - Installation

The awning is delivered as follows:

Cassette with cover, front rail and optional valance attached.

Arms x 1 pair.

Universal brackets

- Establish the fixing height of the blind (we recommend a minimum of 2.25m (88 1/2") headway (i.e. from the front rail to ground level).
- Once established, mark a position on the wall of the cassette fixing height by adding the arm projection to the headway height. The position of the brackets and screw holes should be marked on the wall in the correct positions ensuring the brackets are perfectly level and square. (NB: If the wall is out of square it will be difficult to clip the cassette box into the brackets - in this case the brackets will need to be packed to ensure they are linearly square).
- The brackets also enable the awning to be top fixed and these should be installed in a similar way ensuring they are square and level.
- Place the awning cassette into the brackets and tighten the retaining bolts.
- Position the arms into the front rail and hold against the wall.
- Mark the position of the arm bracket holes ensuring the arms are perfectly square and drill.
- Turn the arms the other way around (so they point downwards) and fit the top hole of each arm.
- Push the arms half-way up (taking great care as you will be pushing against the spring tension) then drill and fix the bottom hole.
- Undo the bolt from the arm to front rail connector, slide the nut into the front rail, push up the arms and connect the front rail.
- Before the arm bolts are tightened, use a spirit level to ensure they are vertical.

ITALIA NC - Installation

The awning is delivered as follows:

Roller with cover, front rail and optional valance attached.

Arms x 1 pair.

Universal brackets

Optional UPVC cover profile and brackets.

- Establish the fixing height of the blind (we recommend a minimum of 2.25m (88 1/2") headway (i.e. from the front rail to ground level).
- Place the roller fixing brackets onto the roller whilst the awning is on the floor.
- Measure outside edge to outside edge of the brackets to ascertain overall awning width.
- Mark the position of both brackets on the wall.
- Drill and fix the gear bracket.
- Pick the roller up and put the square pin end into the bracket.
- Hold the 2nd bracket onto the end of the roller.
- Place a spirit level on to the top of the roller and mark the position of the 2nd bracket.
- Drill and loosely fix so the bracket can slide in the oval bracket fixing holes.
- If you have a top profile this should now be installed on the 'L' shaped brackets provided.
- Reposition roller, slide bracket into roller and tighten fixings with spanner.
- Undo the bolt from the arm to front rail connector, slide the nut into the front rail, push up the arms and connect the front rail.
- Before the arm bolts are tightened, use a spirit level to ensure they are vertical.

GENERAL AWNING USE AND MAINTENANCE

General safety information

- In the event of rain, wind or snow, fully close the awning. Danger of personal injury or damage to property.
- It is strictly forbidden to remove the safety devices installed on the awning.
- Powered awnings are opened and closed with a switch and/or a remote control unit: both these devices must be kept OUT OF REACH OF CHILDREN.
- Make sure no-one is standing near the awning while it is opening/closing.
- Do not place objects on the awning fabric.
- It is forbidden to hang from or hold on to the awning: risk of serious personal injury and damage to the awning.
- In case of doubt, consult your dealer BEFORE using the awning.
- Users may not perform unauthorised operations on the awning.
- If the product is tampered with or modified without the manufacturer's permission, the latter hereby declines all liability for any damage that may derive.
- The user must promptly inform the dealer if faults and/or malfunctions are found on a safety device, or if any hazardous situations arise.
- All maintenance and cleaning operations must be performed with the mains power supply disconnected.
- Installation, initial start-up, adjustment and extraordinary maintenance operations may only be performed by suitably qualified specialised technical staff. Please contact Technical Assistance.

Residual risks

DANGER OF FINGERS/ARMS GETTING CAUGHT in the folding or drop arms while the awning is closing and opening. The product must be installed at a minimum height of 2500 mm.

Description of awning

Folding arm or drop arm awnings can be installed on either the wall and the ceiling and can either be manually operated or powered by a motor; in the latter case, a wind sensor (anemometer), or sun/wind sensor can be installed on request.

Components

The awning comprises a metal structure and a piece of fabric.

- Metal structure: this consists of a frame containing the various mechanisms for opening and closing the awning. It comprises a box, a blind roller, a terminal bar, and mechanised folding arms fitted with sheathed cables or a stainless steel chain.
- Fabric: this covers and protects the awning. The construction materials have been chosen to optimise resistance to wear deriving both from use and the weather.

Foreseen use and conditions of use

This awning has been designed to offer protection from the sun and adjust the reflection of light in the area beneath it; the product may only be used to move the incorporated fabric up and down in order to reach its fully open and closed positions and, where applicable, intermediate positions. The awning may only be used for the above purpose, even if it is installed with a waterproof or PVC fabric. The awning may be used by non-professional adult operators.

ATTENTION-IT IS FORBIDDEN to use the awning for any other purpose as the relative operating conditions could jeopardise personal safety.

ATTENTION-IT IS FORBIDDEN to place objects on the awning and/or hang on to it.

The Manufacturer declines all liability for injury to persons or damage to property deriving from improper use. Failure to observe the conditions of use automatically invalidates any warranty granted by the Manufacturer.

ATTENTION-IT IS FORBIDDEN to install powered awnings in explosive atmospheres.

In the event of rain, wind or snow, fully close the awning. Danger of personal injury or damage to property.

The installation area must be large enough to allow the awning to be properly used and opened to its full extent.

ATTENTION-IT IS FORBIDDEN to install or place ladders or other objects in the operating area of the awning.

Transportation

Handling and transport operations are performed by the Dealer and/or Manufacturer which undertake to transport the product in suitable packaging and keep it in perfect condition until it is delivered to the customer. Damage to the product caused by the awning being dismounted and handled/transported after installation is not covered by the warranty. Dispose of and/or reuse the packaging according to the regulations in force in the country the product is installed in.

Installation

Assembly, installation and initial start-up operations may only be performed by suitably qualified specialised technical staff provided by the Dealer or the Manufacturer.

Use

- Make sure no-one is standing near the awning while it is opening/closing.
- Only use the awning as sun protection and for the purposes indicated in "Foreseen use" of this manual.
- It is strictly forbidden to climb onto or hang/place objects on the awning.
If mould develops on the fabric, clean it as shown in "Cleaning".

In the event of a malfunction, contact your dealer.

MANUAL AWNING

Open and close the awning using the supplied rod and crank. POWERED AWNING Open and close the awning using the:

- SWITCH, installed near the awning in a position offering the user a full view of the awning. If the switch is installed outdoors, it must be suitably protected;
- portable or wall-mounted REMOTE CONTROL UNIT.

Maintenance

Switch off the mains supply before carrying out any maintenance and cleaning operations. Before operating the awning, carefully read "Safety".

Cleaning

Switch off the mains supply before carrying out any maintenance and cleaning operations.

Keep the fabric clean to prevent the formation of mould caused by deposits of dust or other materials on the fabric; this can be done by vacuuming the dust or cleaning the fabric with a sponge or cloth and warm water. Dry the fabric afterwards. Cleaning using ladders, trestles and the like may only be performed by specialist staff who must observe current safety legislation and use personal protective equipment such as safety harnesses and cables.

ATTENTION Do not use solvents - ammonia - hydrocarbons.

Tecnical Data

Max overall dimensions and weight (1 pair of arms)

System	Width (cm)	Height (cm)	Projection	Approx. weight (kg)	Blind roller Ø (mm)
			(awning open) (cm)		
Armony	600		360	70-80	70
Base Plus	500		310	65-70	70
Palladio 2060	600		360	65-70	70
Milano	500		260	55-60	60
Arezzo 2020	600		410	65	70
Orvieto	600		410	65	70
Variosun	600		360	65	70
Italia C/PS	500	300	180	42-50	60
Silver PS/BQ	500		235	45-50	60

Wind resistance (at maximum dimensions)


	Armony 3000		Base Plus	
Class tested by TÜV according to EN 13561:2004	2 (cm 600 x 310)	1 (cm 600 x 360)	2 (cm 500 x 260)	1 (cm 600 x 310)
Nominal test pressure p (N/m ²)	70	40	70	40
Class according to the proposal of revision of § 4.4 of EN 13561:2004	3 (cm 600 x 310)	2 (cm 600 x 360)	3 (cm 500 x 260)	2 (cm 500 x 310)
Dynamic pressure q q (N/m ²)	110	70	110	70

	Arezzo 2020		Orvieto	
Class tested by TÜV according to EN 13561:2004	2 (cm 600 x 310)	1 (cm 600 x 410)	2 (cm 600 x 310)	1 (cm 600 x 410)
Nominal test pressure p (N/m ²)	70	40	70	40
Class according to the proposal of revision of § 4.4 of EN 13561:2004	3 (cm 600 x 310)	2 (cm 600 x 410)	3 (cm 500 x 260)	2 (cm 500 x 310)
Dynamic pressure q q (N/m ²)	110	70	110	70

	Palladio 2060	Milano	Variosun	Italia	Silver PS/BQ
Class tested by TÜV according to EN 13561:2004	2	1	2	3	1
Nominal test pressure p (N/m ²)	70	40	70		40
Class according to the proposal of revision of § 4.4 of EN 13561:2004	3	2	3		2
Dynamic pressure q q (N/m ²)	110	70	110		70
Static pressure (N/m ²)				110	

Label


Label (A), showing information about the manufacturer, is generally applied to the inside of the end-piece.

 EN 13659	HunterDouglas Ltd. Window Fashion Division Mersey Ind. Est., Heaton Mersey, Stockport, Cheshire SK4 3EQ.
	HD Ref:

Label (A)

Label (B), listing the main product features and data, is applied here on the instructions document.

Label (B)


HunterDouglas Ltd. Window Fashion Division Mersey Ind. Est., Heaton Mersey, Stockport, Cheshire SK4 3EQ.
EN 13659
Model:
Wind resistance class:
HD Ref: